

Your First RemoteNet Remote Control

To remote control a Client Mode PC, with real time screen view, and voice conversations at the same time.

Hardware Setup

Client Mode PC: Windows **XP** with IP: **192.168.0.10**

Screen Resolution: **800x600, 16 bit colors**

Scan Block: **26**

Color Palette: **4**

Manager Mode PC: Windows **7** with IP: **192.168.0.3**

Screen Resolution: **1024x768, 32 bit colors**

Scan Block: **26**

Color Palette: **4**

All Open Ports: (Default Setting)

- Test PCs in a **Private** network.

Private IP Address.

The three address ranges reserved for private address space are:

10.0.0.0 - 10.255.255.255

172.16.0.0 - 172.31.255.255

192.168.0.0 - 192.168.255.255

Please refer "**F.A.Q. - How to remote control a network PC via internet**" for

- Control PC with static/dynamic IP address.
- Host computer is located in the internal network behind a NAT based router/firewall.

Windows Security Alert

Allow ME RFC, ME RFM, ME RMC, ME RMM, ME RVC, ME RVM and MECRM to communicate on these networks:

Please select **Both** "Private networks,..." and "Public networks,..."..

Click on "Allow access"

Figure 2.5.1.1 RemoteNet – Windows Firewall Setting

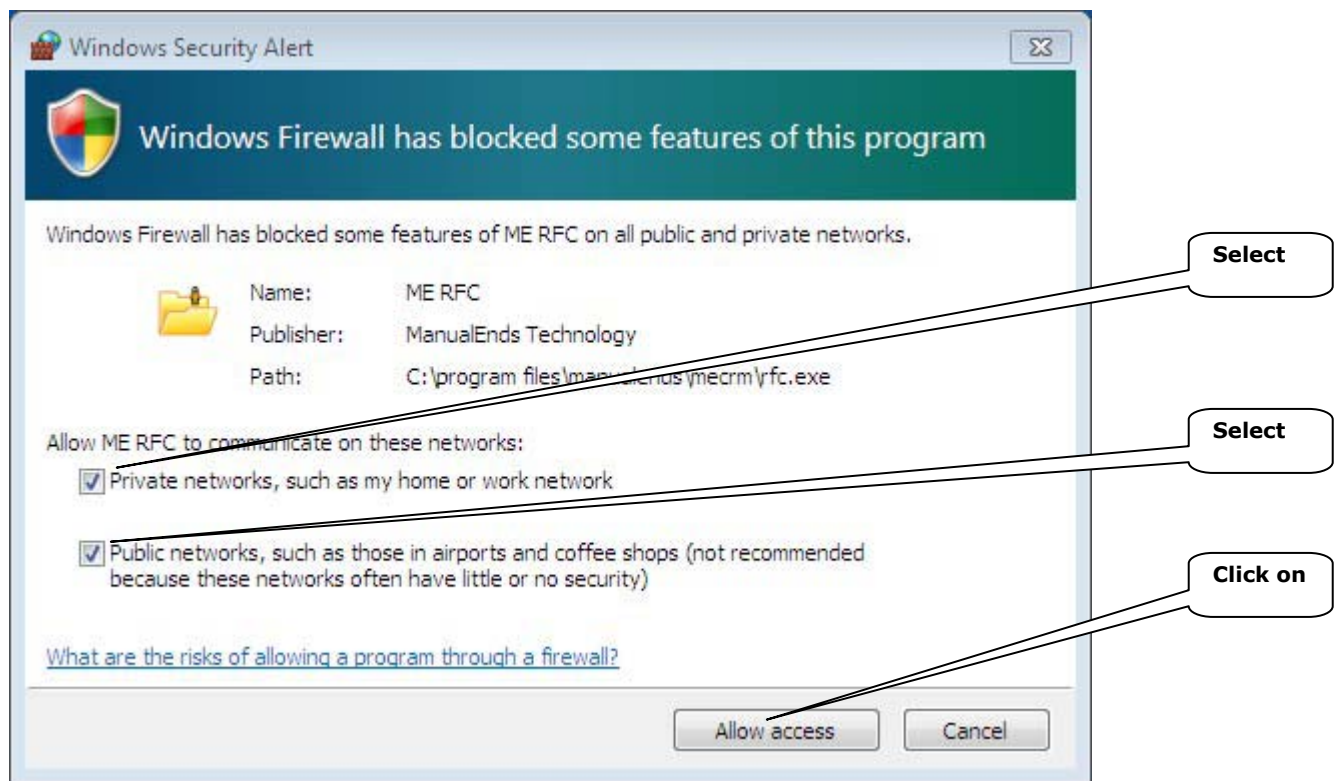


Figure 2.5.1.2 RemoteNet – Windows Firewall Setting

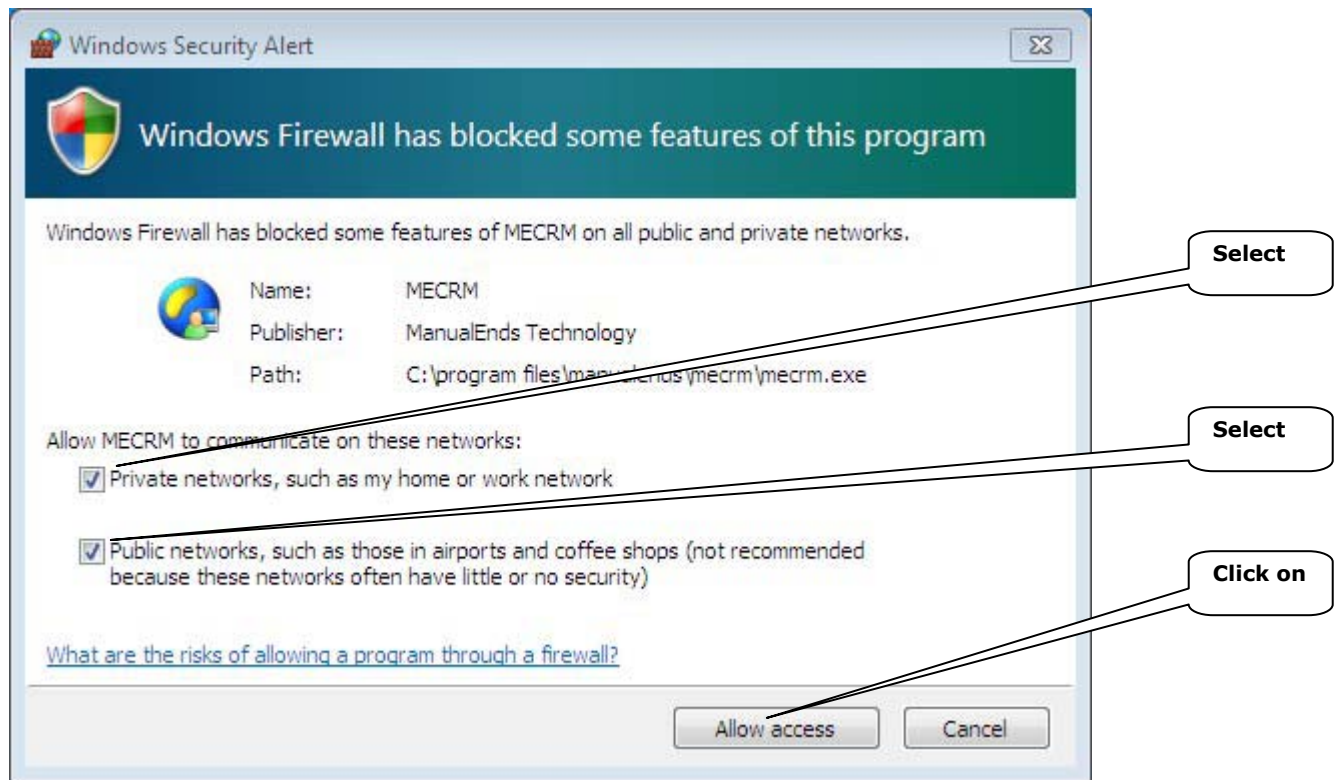
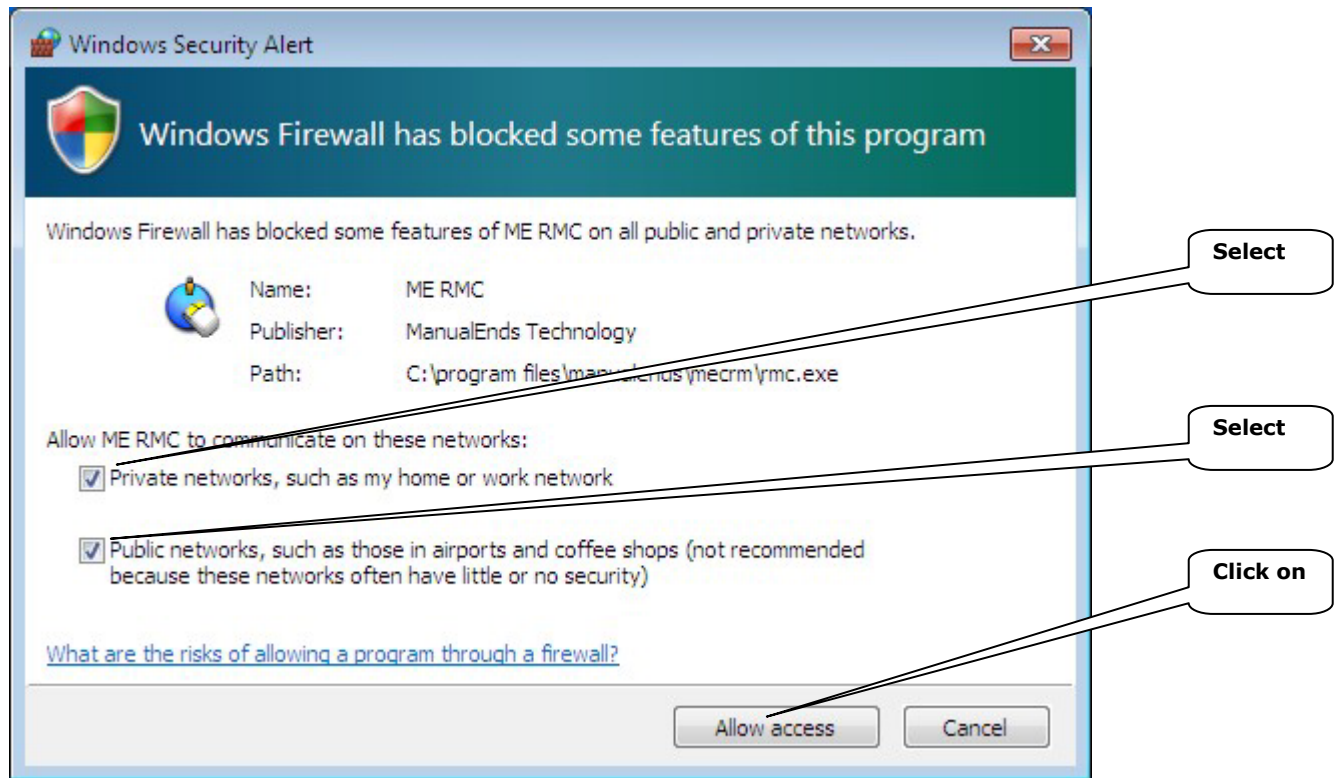


Figure 2.5.1.3 RemoteNet – Windows Firewall Setting



Step 1 – Procedure

Client Mode PC - Windows XP

1. Find system IP.

Press the button of “My IP Address” to get a list of your system IPs and select the IP address (for example, **192.168.0.10**) into the text box of System IP Address window.

Figure 2.5.2 My IP address tool

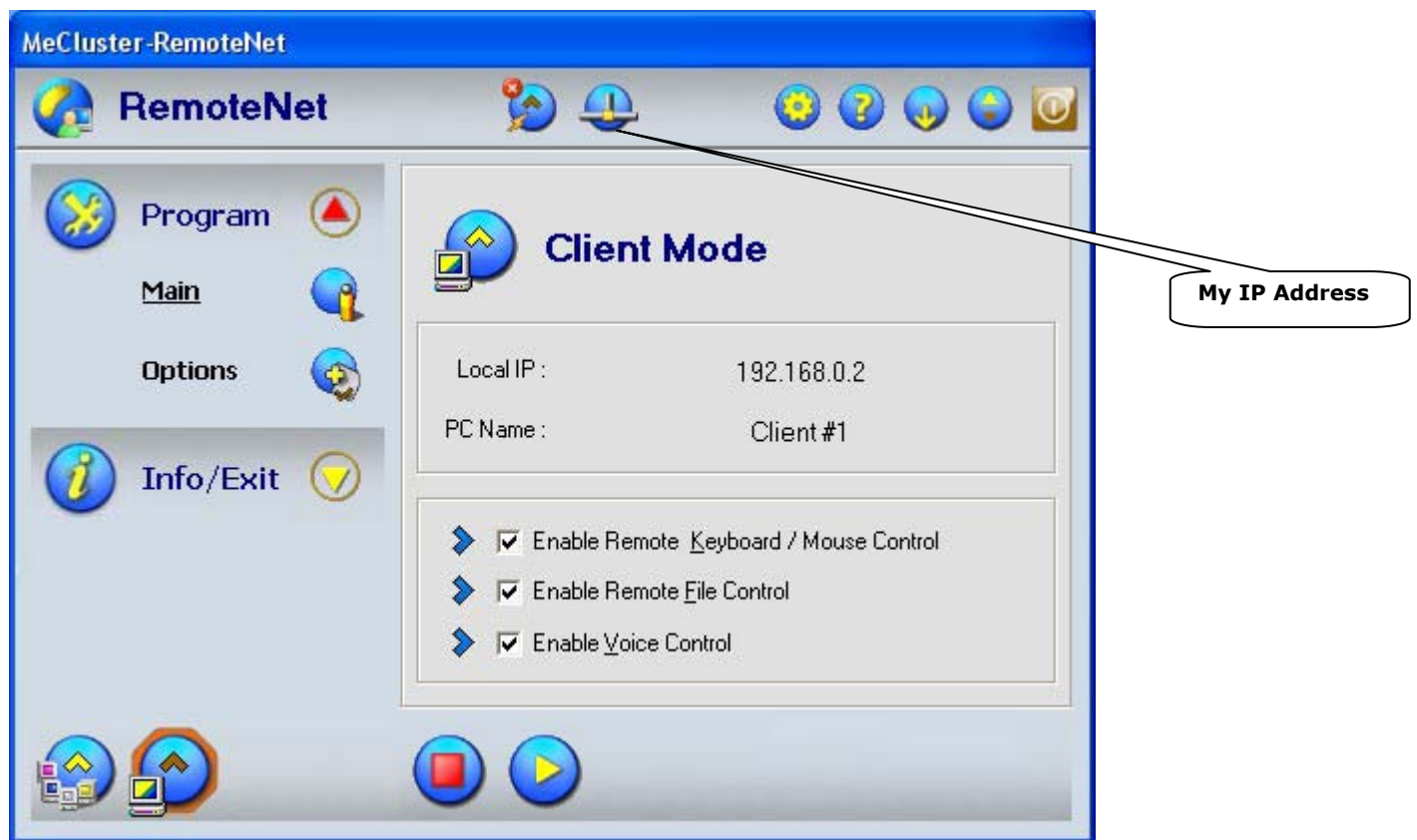


Figure 2.5.3 “My IP Address” tool main window



2. Check IP connection.

Under the MS-DOS prompt, by specifying an IP address with the ping command, you can find out whether a TCP/IP connection is established.

For example, "**ping** 192.168.0.10" command was able to evoke a response.

In order to use RemoteNet, you should establish a connection correctly.

3. Set PC Name, User Name, Password at Options-IP & Security section (Default)

PC Name – "**PC #1**"

User name – "**123456789**"

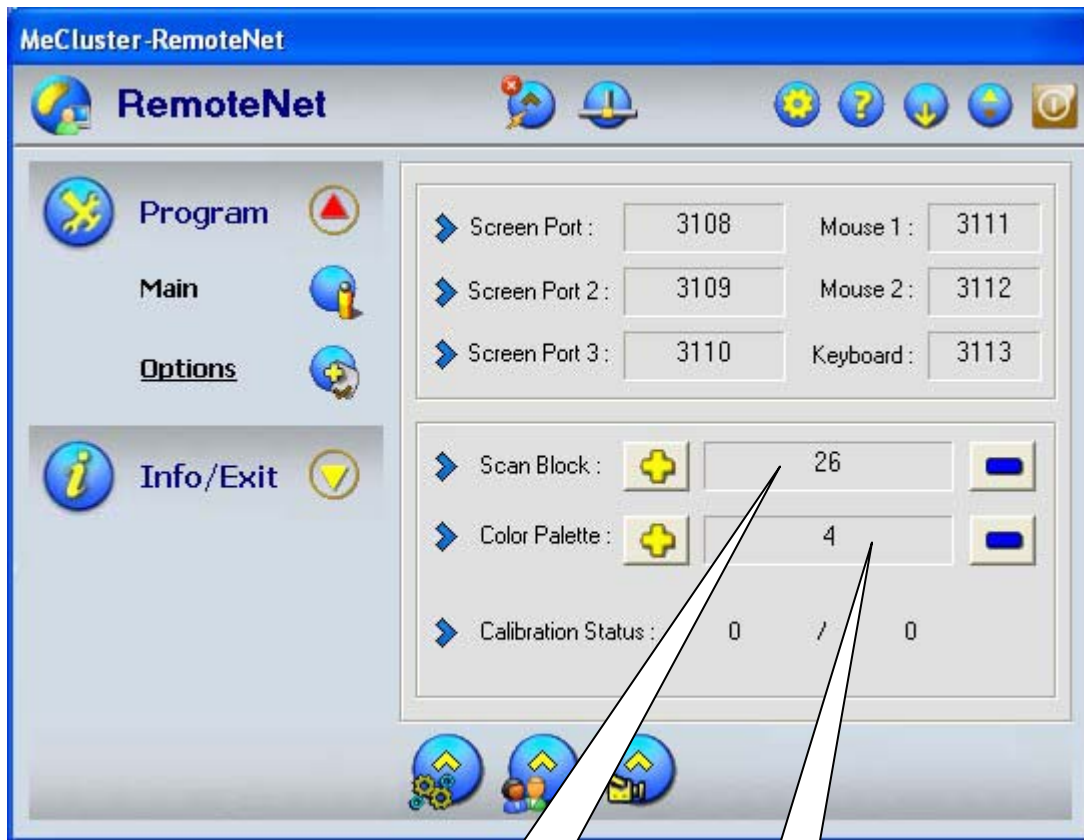
User password – "*****" ("**123456789**")

. **Figure 2.5.4** Set username and password



4. Check Scan Block: 26, Color Palette: 4

Figure 2.5.5 Client Mode PC, Options-Screen Section

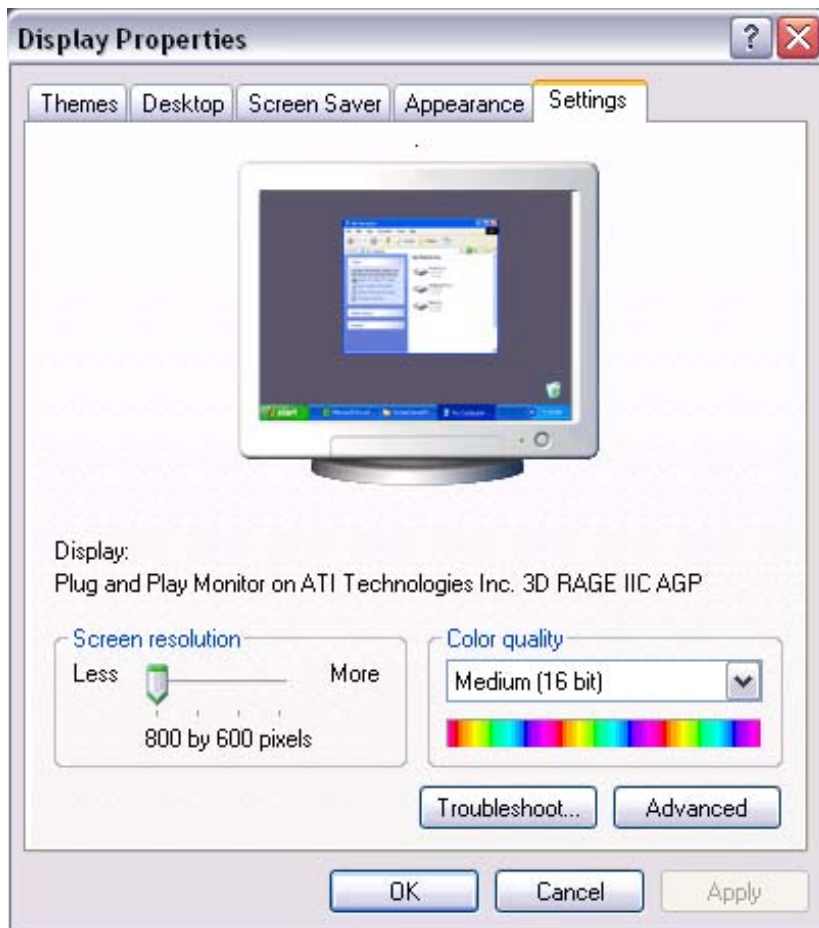


Scan Block: 26

Color Palette: 4

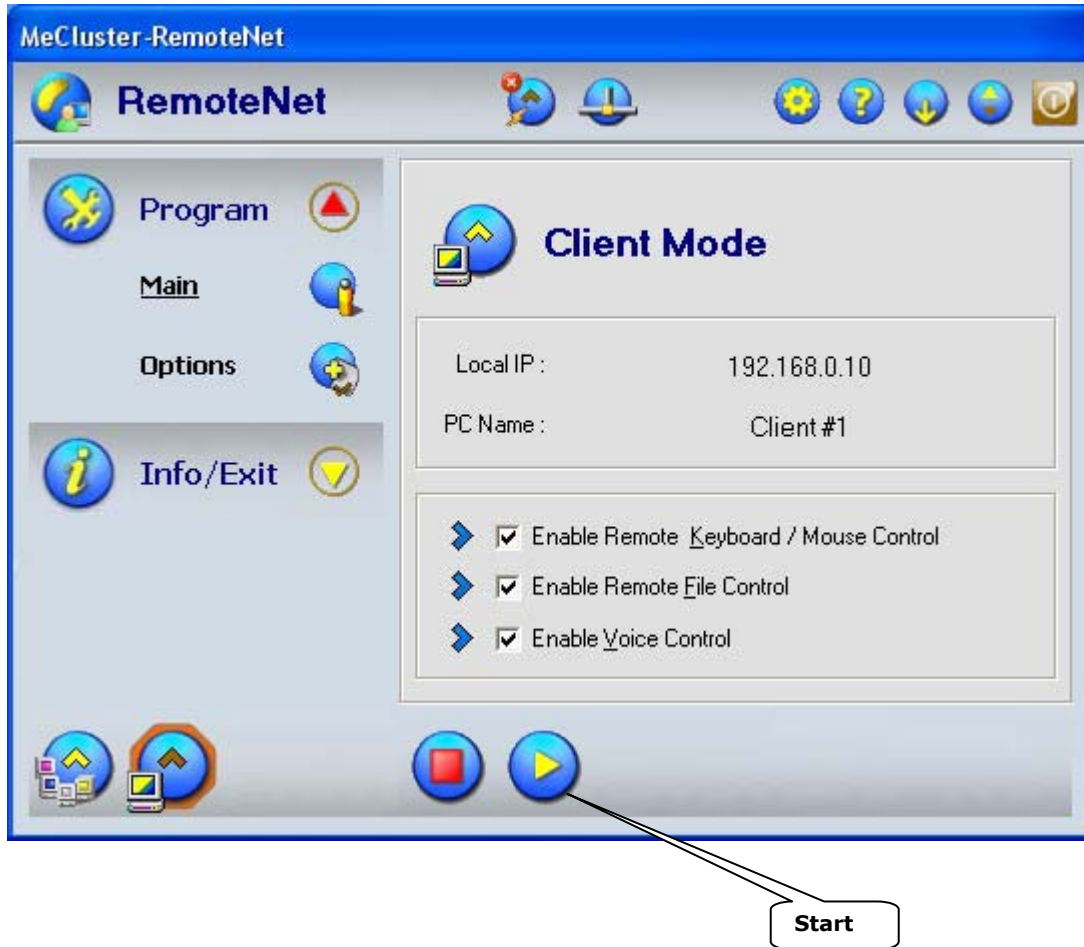
5. Check System Screen Resolution: **800x600**, **16** bit colors

Figure 2.5.6 Client Mode PC, Check System Screen Resolution



6. Start RemoteNet - Client Mode PC.

. **Figure 2.5.7** Start RemoteNet at Client Mode PC



Once you start Local Client, RemoteNet will stay at system-tray. Sub programs (File Client, Mouse Client, or Voice Client) will be executed and stay at system-tray.

Figure 2.5.8 Sub program "File Client".



Figure 2.5.9 Sub program “Mouse Client”.

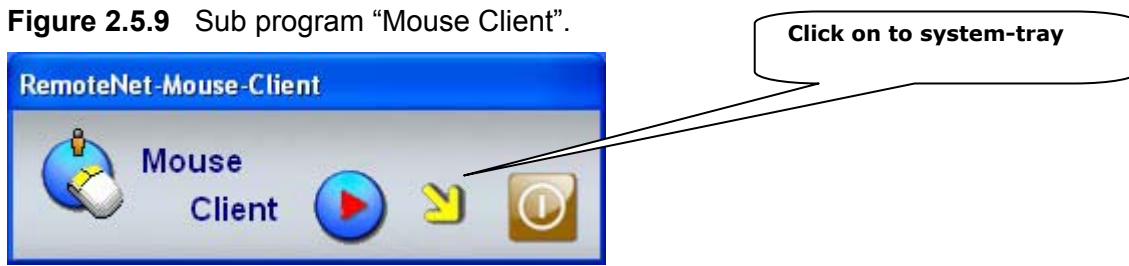
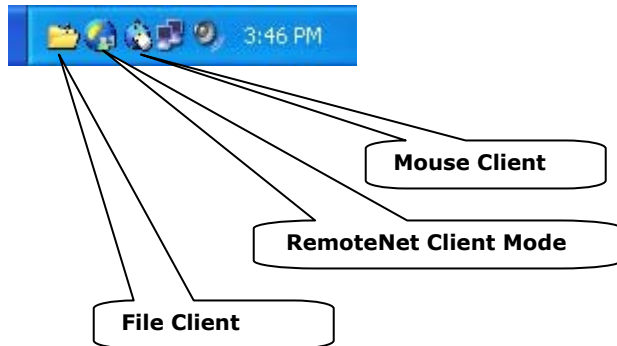


Figure 2.5.10 Icon of RemoteNet and sub programs at system-tray



5. Windows XP, Windows Security Alert, Set up Firewall:

If you find the “Windows Security Alert” message box, you have to select “Unblock” to avoid blocking RemoteNet.

Figure 2.5.11 Select “Unblock”



Figure 2.5.12 Select “Unblock”



Figure 2.5.13 Select “Unblock”

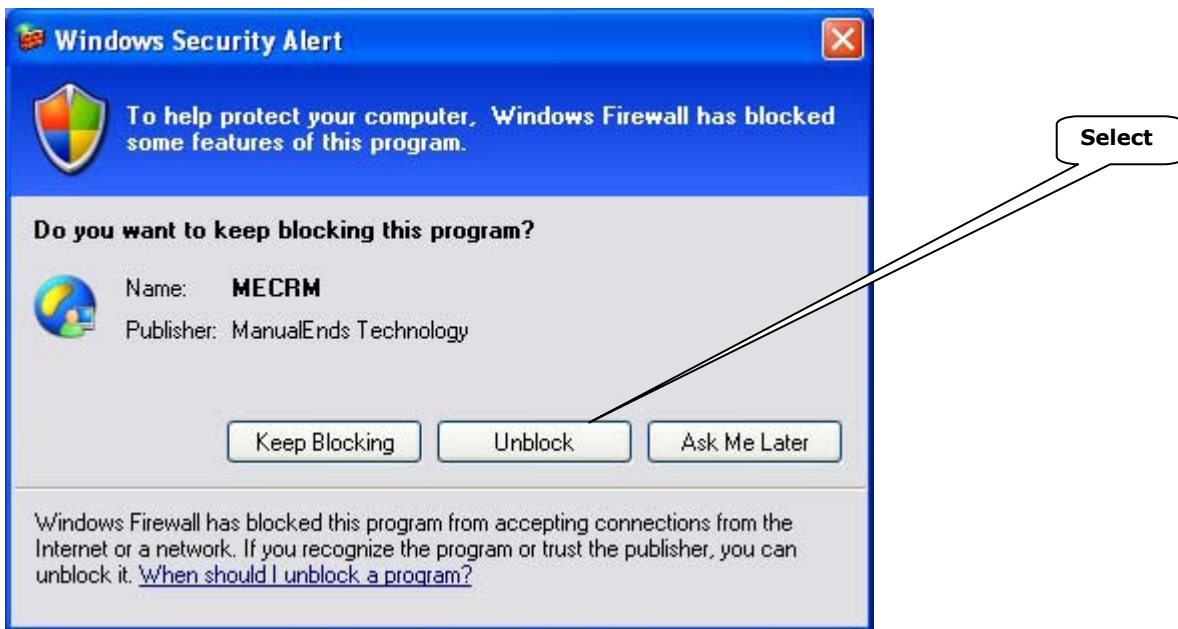


Figure 2.5.14 Select "Unblock"



Manager Mode PC - Windows 7

1. Find system IP.

Press the button of “My IP Address” to get a list of your system IPs and select the IP address (for example, **192.168.0.3**) into the text box of System IP Address window.

Figure 2.5.15 My IP address tool

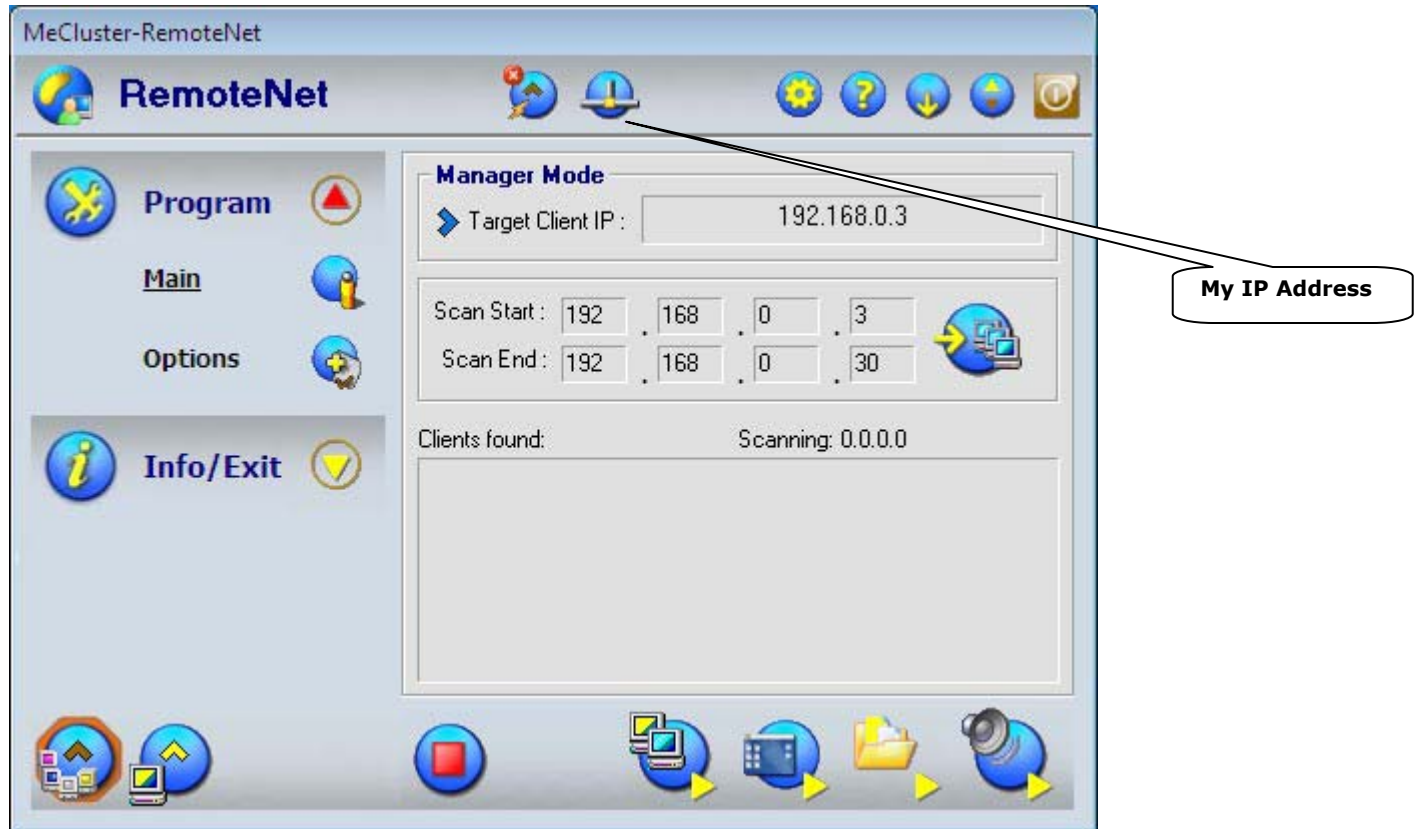
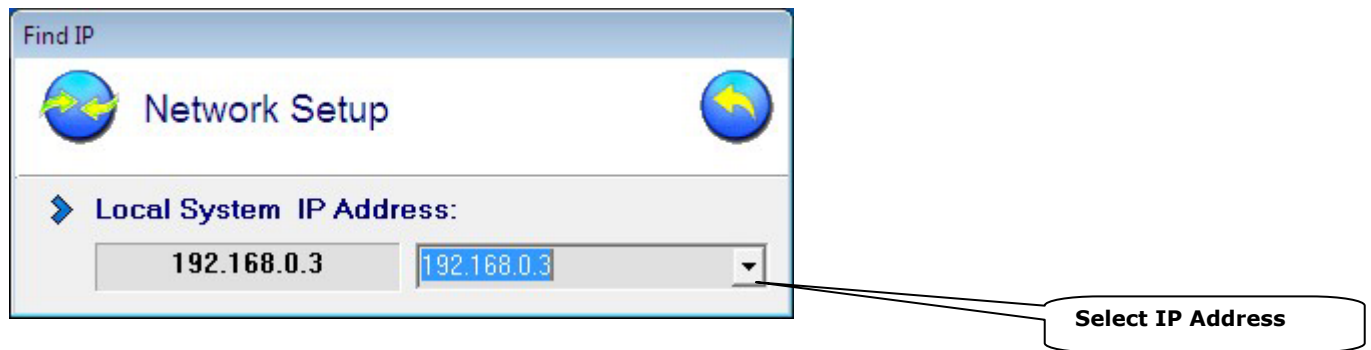


Figure 2.5.16 “My IP Address” tool main window



2. Check IP connection.

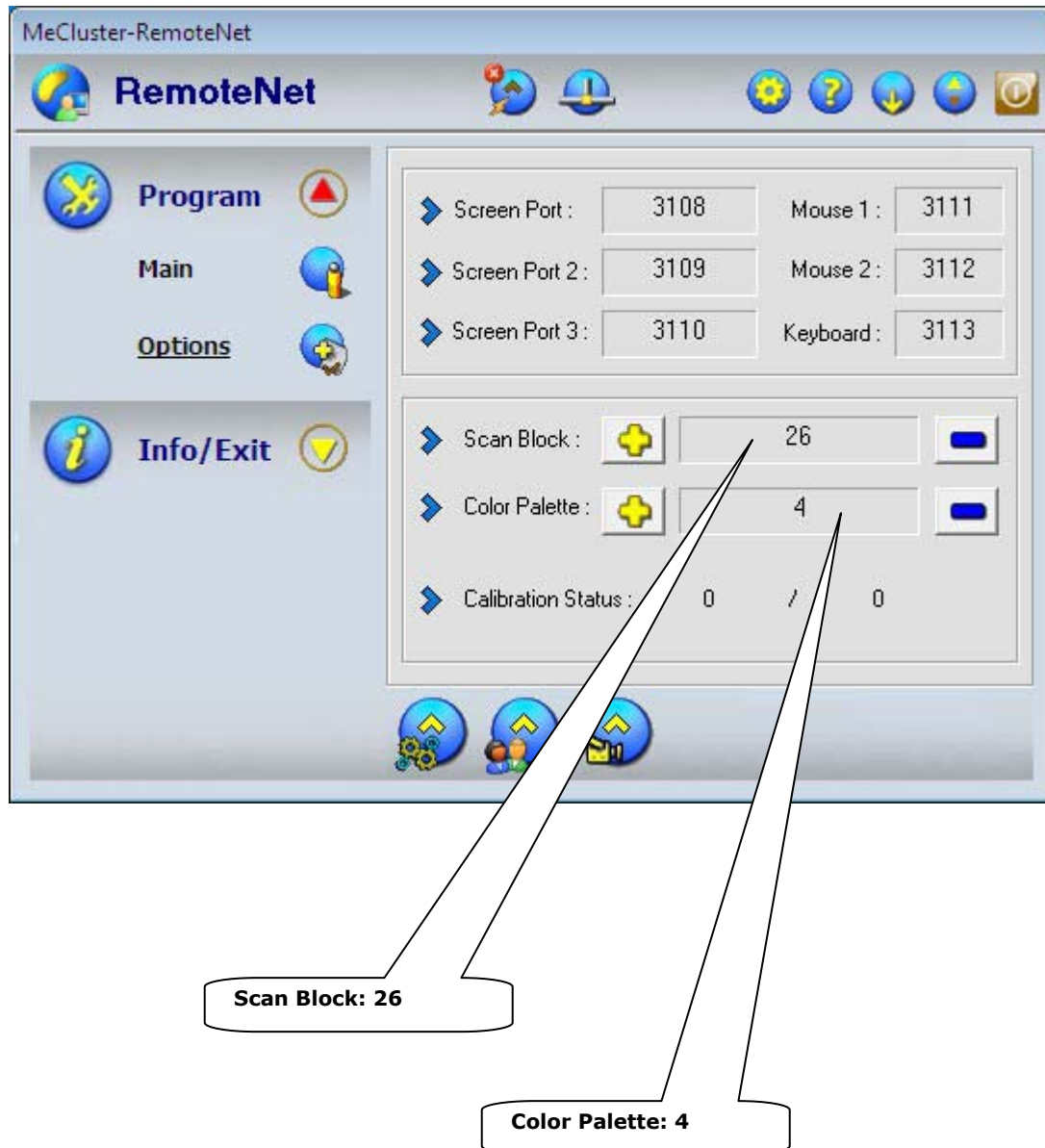
Under the MS-DOS prompt, by specifying an IP address with the ping command, you can find out whether a TCP/IP connection is established.

For example, "**ping** 192.168.0.2" command was able to evoke a response.

In order to use RemoteNet, you should establish a connection correctly.

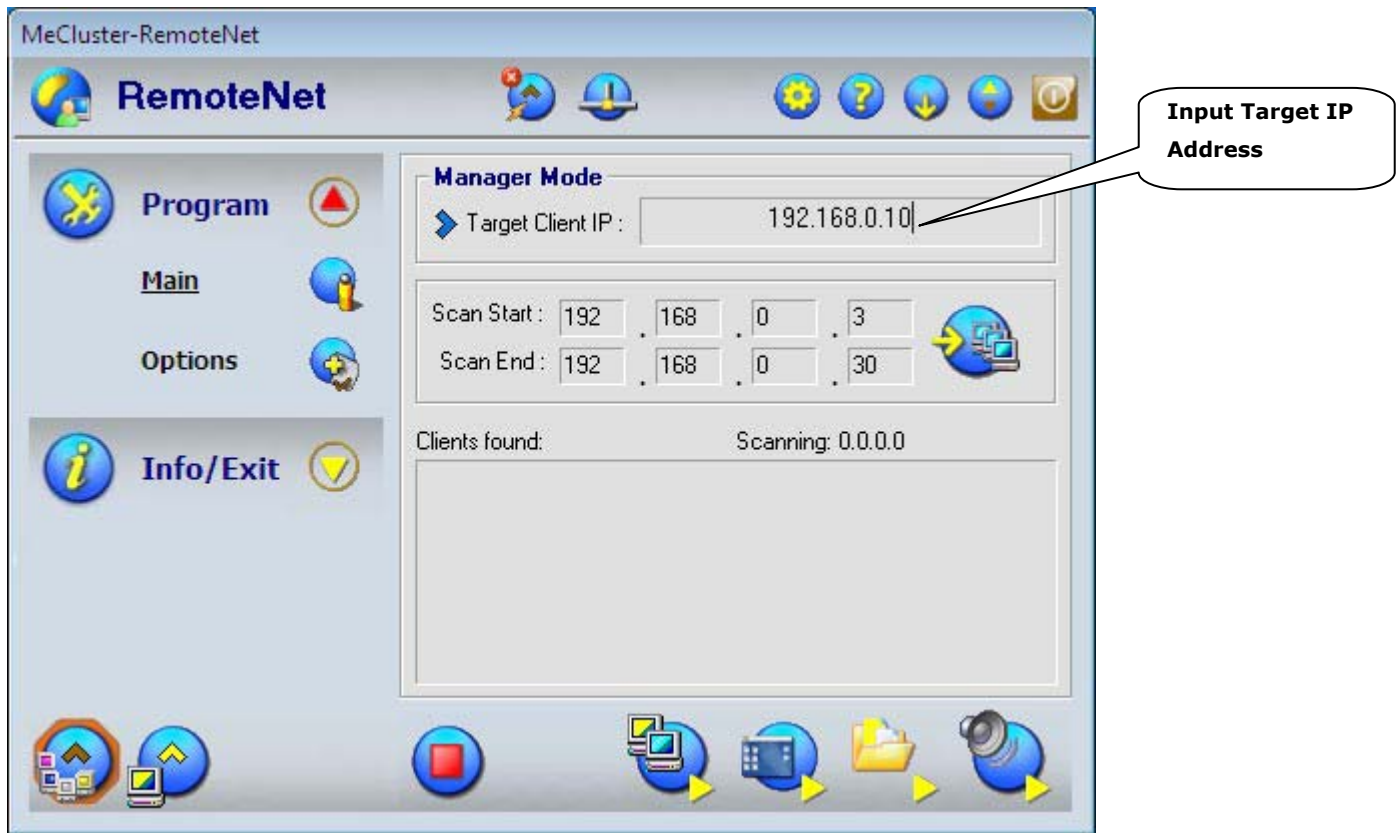
3. Check Scan Block: 26, Color Palette: 4

Figure 2.5.17 Manager Mode PC, Options-Screen Section



4. Input a Target Client IP address (in this case, 192.168.0.10)

Figure 2.5.18 Manager Mode PC



5. Or set the range of IP address for “**Scan IP**” (in this case, Scan Start: 192.168.0.10, Scan End: 192.168.0.10).

Figure 2.5.19 Manager Mode PC

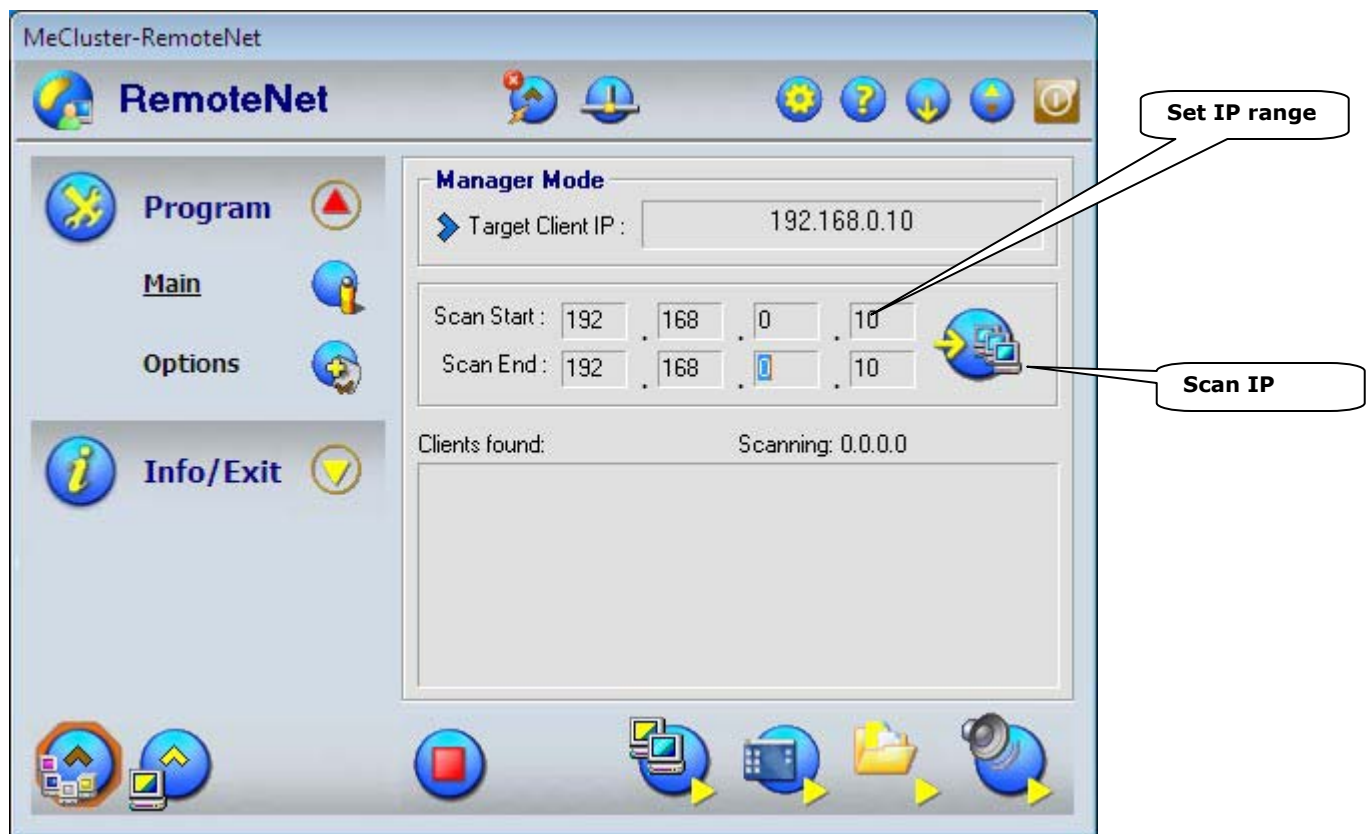


Figure 2.5.20 Click on and select it

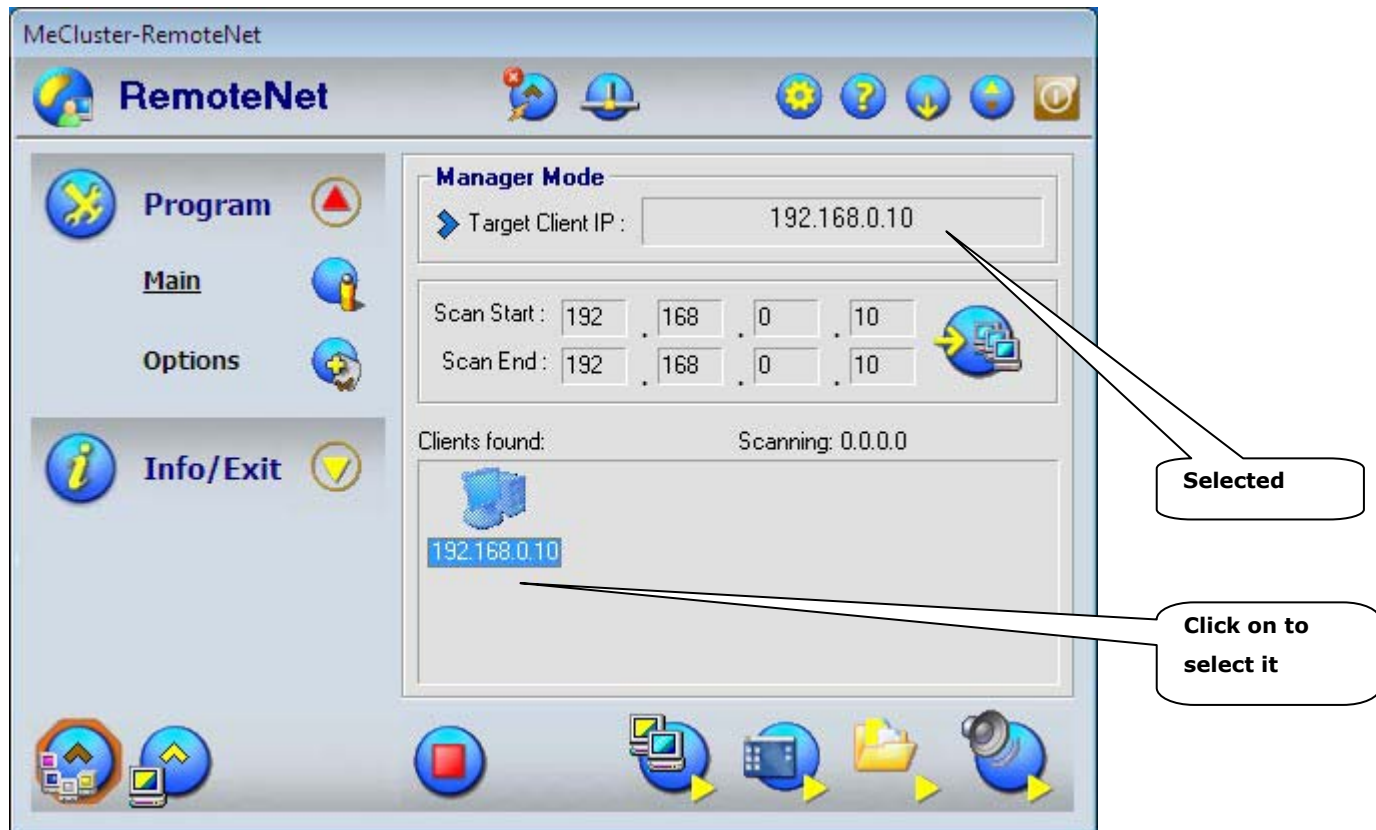
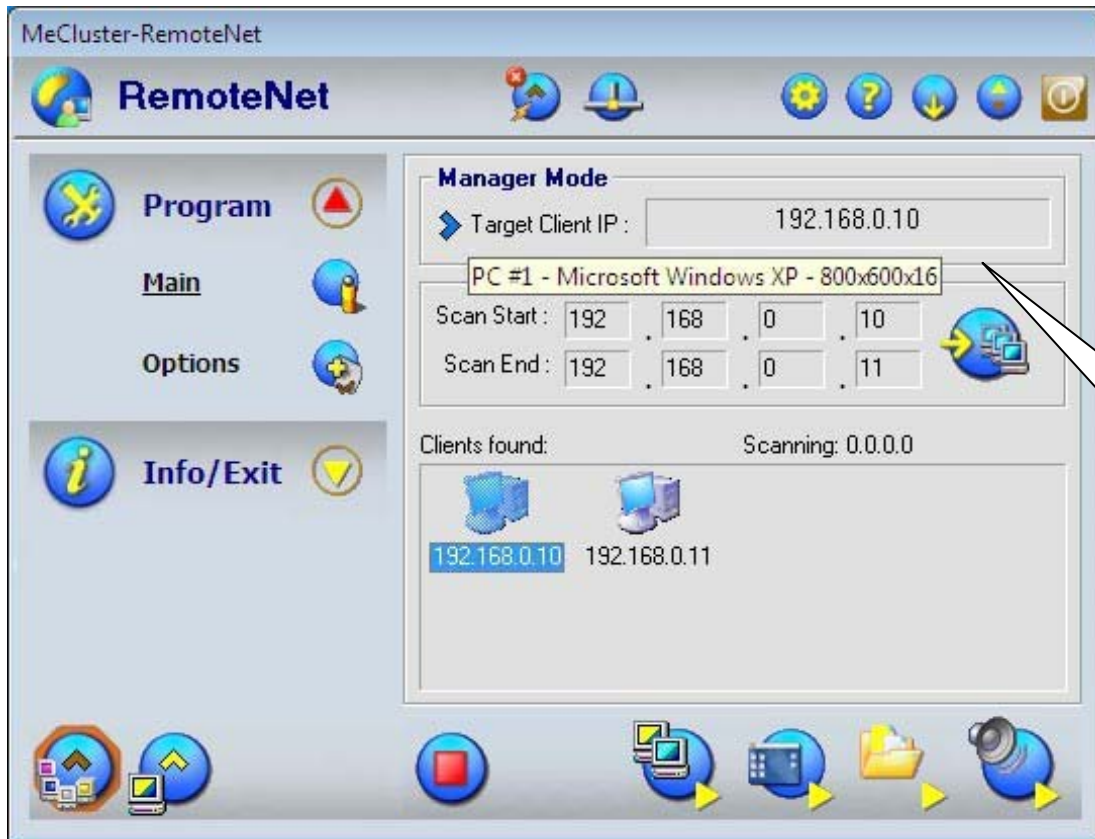


Figure 2.5.21 Click on and show information



Note:

Click on PC icon and move mouse to Target Client IP.

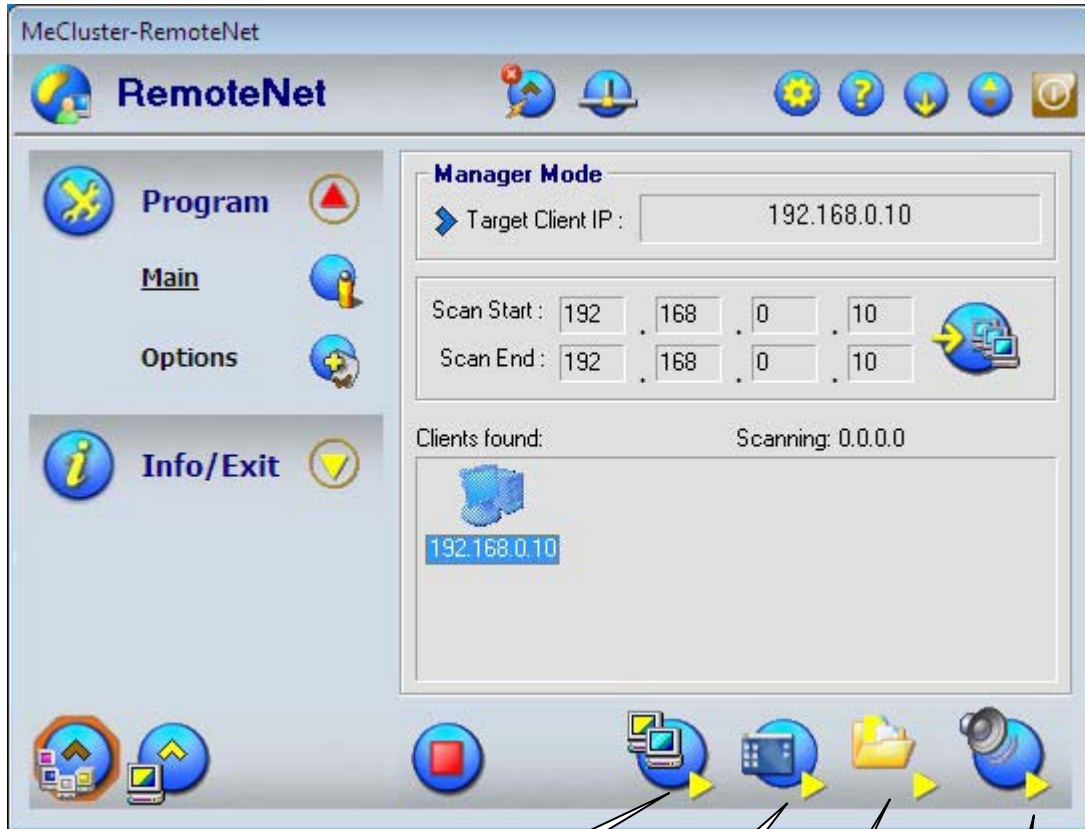
Information:

“PC # 1 - Microsoft Windows XP - 800x600x16”

“Name of selected PC - OS version - Screen Resolution (800 by 600 pixels, 16 bit Color Quality)”

- After setup and select a Client Mode PC, you could start Remote Command Control, File Transfer, Real Time Screen View, or Voice Conversations to Client Mode PC.

Figure 2.5.22 The Manager window.



Remote Command Control

View desktop screen at real time

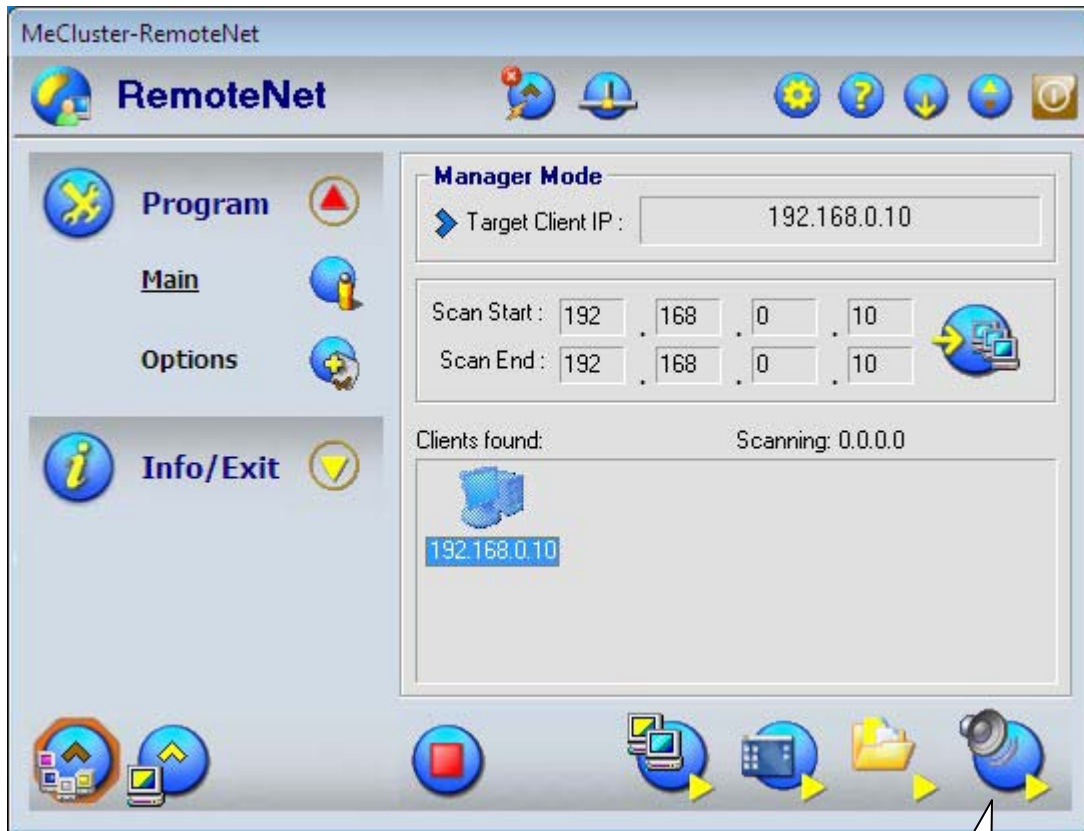
File Transfer

Voice communication

Step 2 – Test

Manager Mode PC – Start Voice Conversations

Figure 2.5.23 Voice Communication start icon of RemoteNet.



Start Voice Communication

Figure 2.5.24 Voice Conversations – Voice On

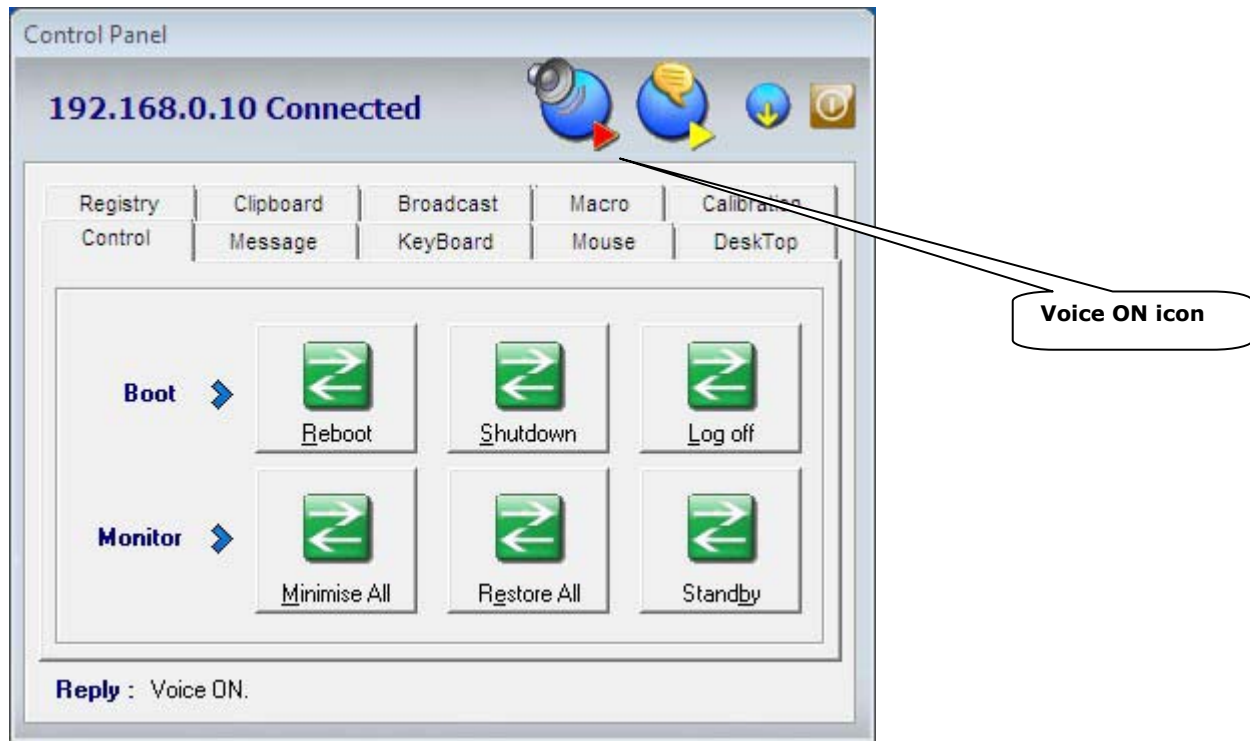
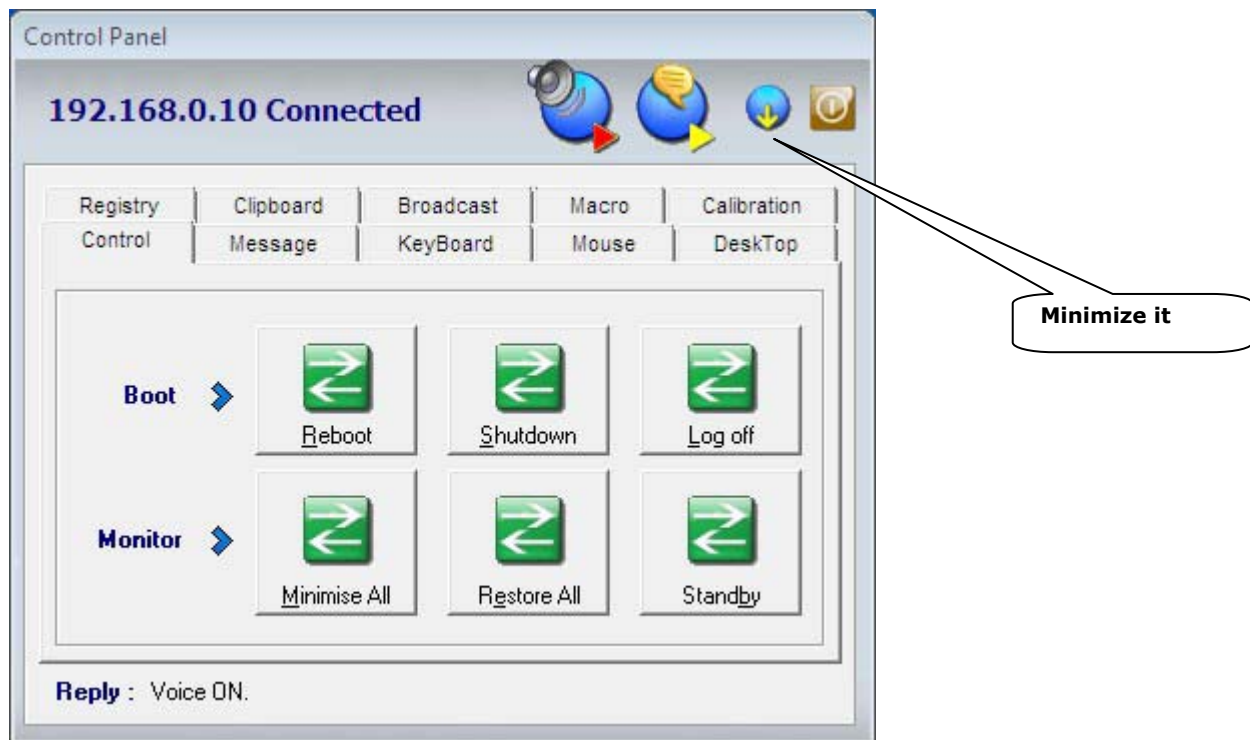


Figure 2.5.25 Voice Conversations – Minimize Control Panel



Manager Mode PC – Start Screen View

Figure 2.5.26 Remote Screen Viewer start icon of RemoteNet.

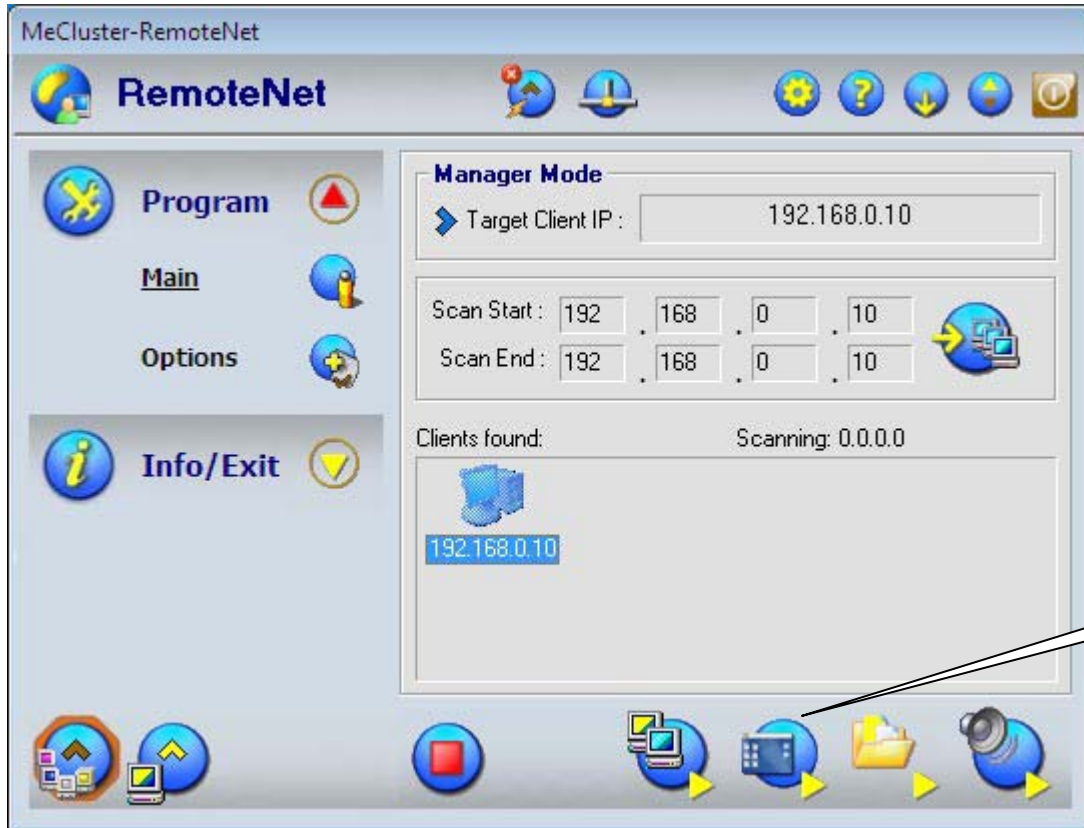
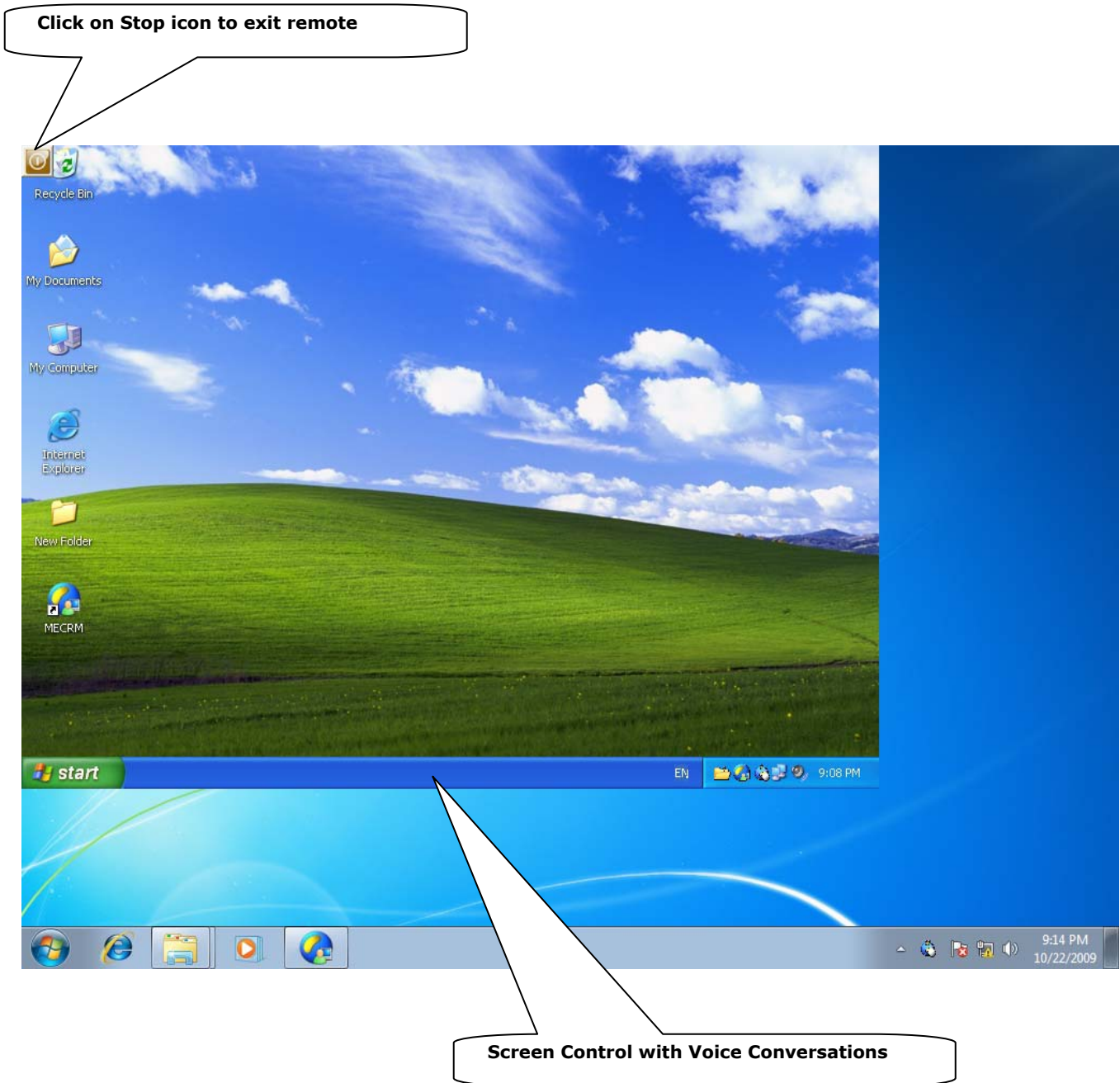


Figure 2.5.27 Start real time screen view at Manager Mode PC



Tip: Move or Resize a Window with the Mouse and Keyboard

Remote Move a Window:

- Select a window and press and hold down the ALT key
- While holding down the ALT key, tap the Spacebar. This will open the control menu for the selected window.
- Press “M” on the keyboard to tell Windows you want to move the window. (Note: If Move is not available, it means the window is full screen and cannot be moved. Press “R” for restore to resize the window for moving.)
- Click on the arrow keys (Right or Left) on the keyboard and move the mouse to new location..
- Click on mouse button to stop moving the window

Remote Resize a Window:

- Select a window and press and hold down the ALT key
- While holding down the ALT key, tap the Spacebar. This will open the control menu.
- Press “S” on the keyboard to tell Windows you want to size the window. (Note: If Size is not available, it means the window is full screen and cannot be moved. Press “R” for restore to resize the window for sizing.)
- Press the arrow keys (Right or Left) on the keyboard to select the edge you wish to move.
- Use the mouse to move the edge.
- Click on mouse button to stop sizing the window.