

What is Service Control Manager and how to start it

Service Control Manager is NT service installer for IP Relay Server.

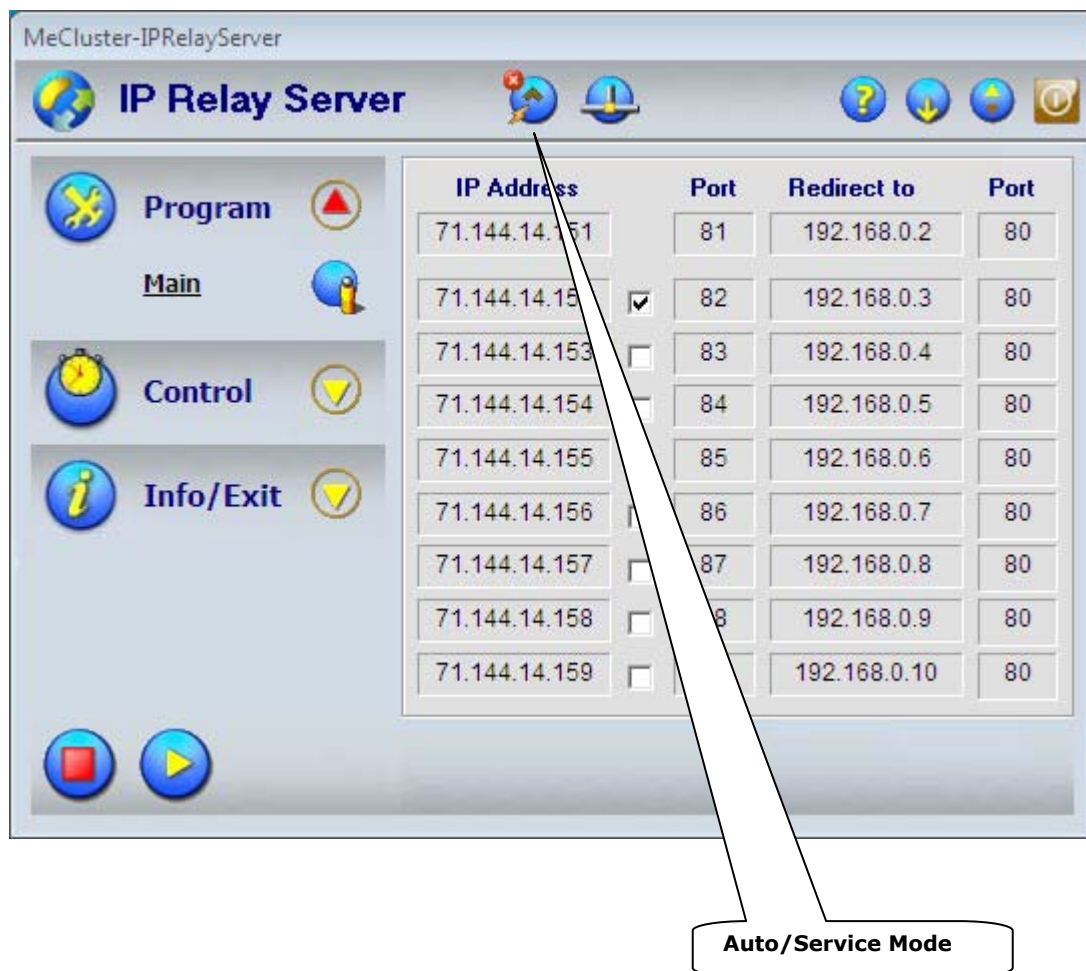
- Provide functions of Service Start, Stop, Installation and Un-installation.
- Monitor “Virtual Tunnels” of IP Relay Server.

To install IP Relay Server as a NT Service (Run as Service), please refer the following:

- Check Local IP Address and Port

-  : “Auto/Service Mode”

Figure 1.1 Click on “Auto/Service Mode” icon



The Auto/Service Mode Wizards Window will pop up.
Select "Service Mode" and click on Next button.

Figure 1.2 Auto/Service Mode Wizards Window

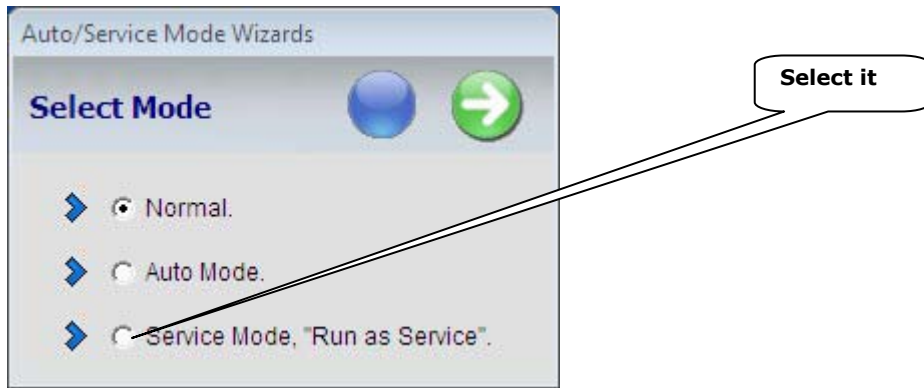
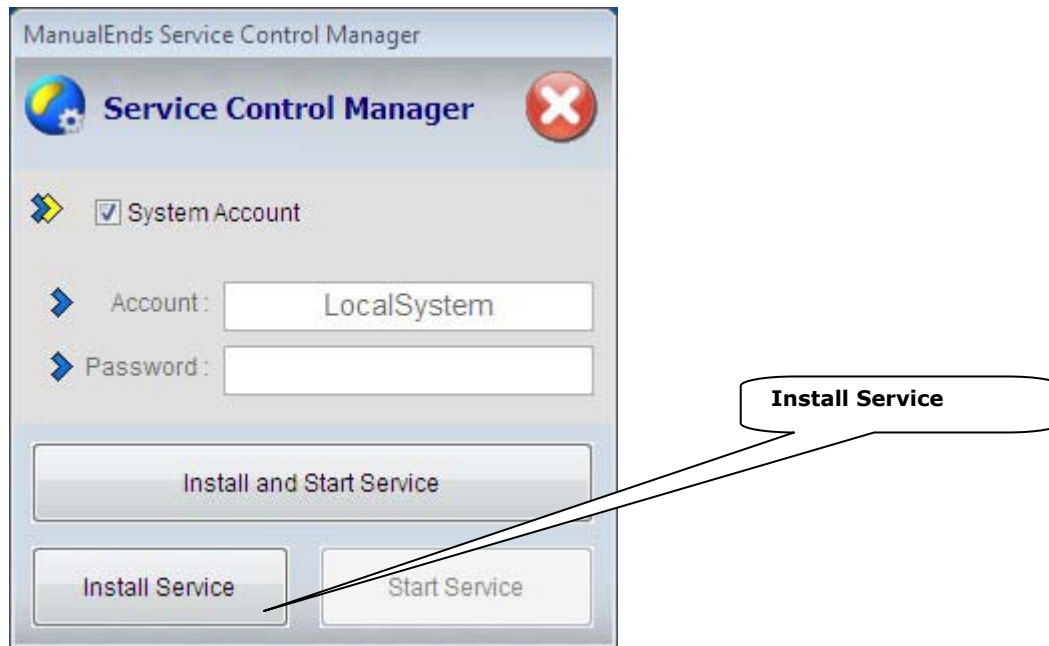


Figure 1.3 Auto/Service Mode Wizards Window



The Service Control Manager Window will pop up. Click on "Install Service"

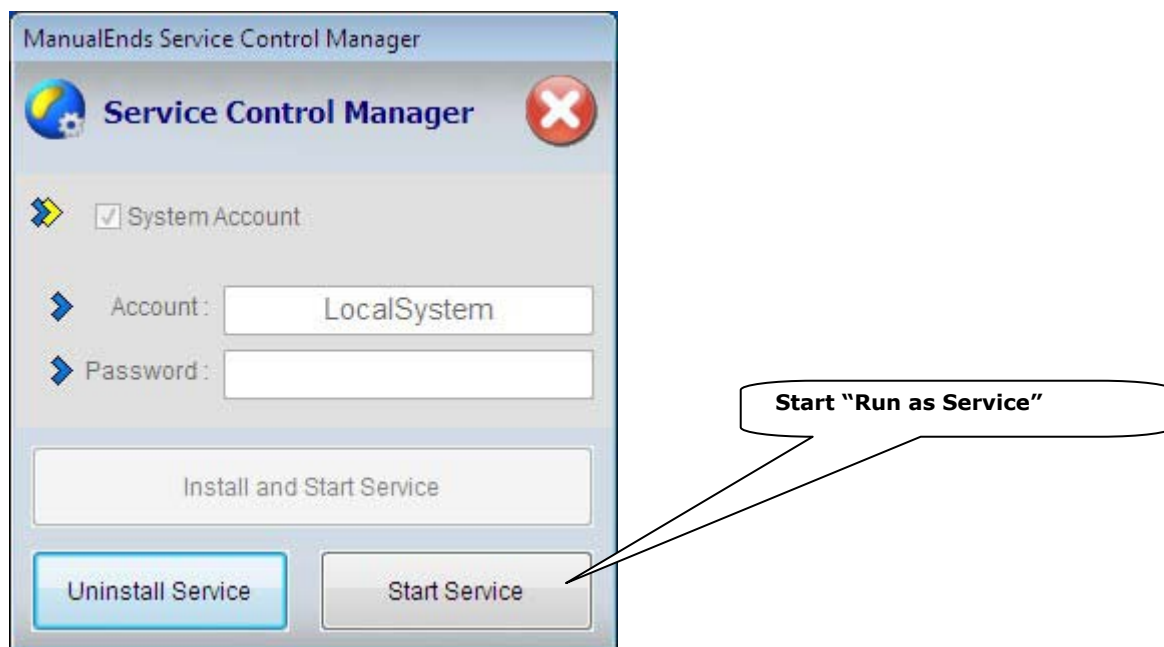
Figure 1.4 Service Control Manager Window



There are two (2) ways to start it as NT Service.

First, click on "Start Service" button. The IP Relay Server is running as NT Service at windows background now.

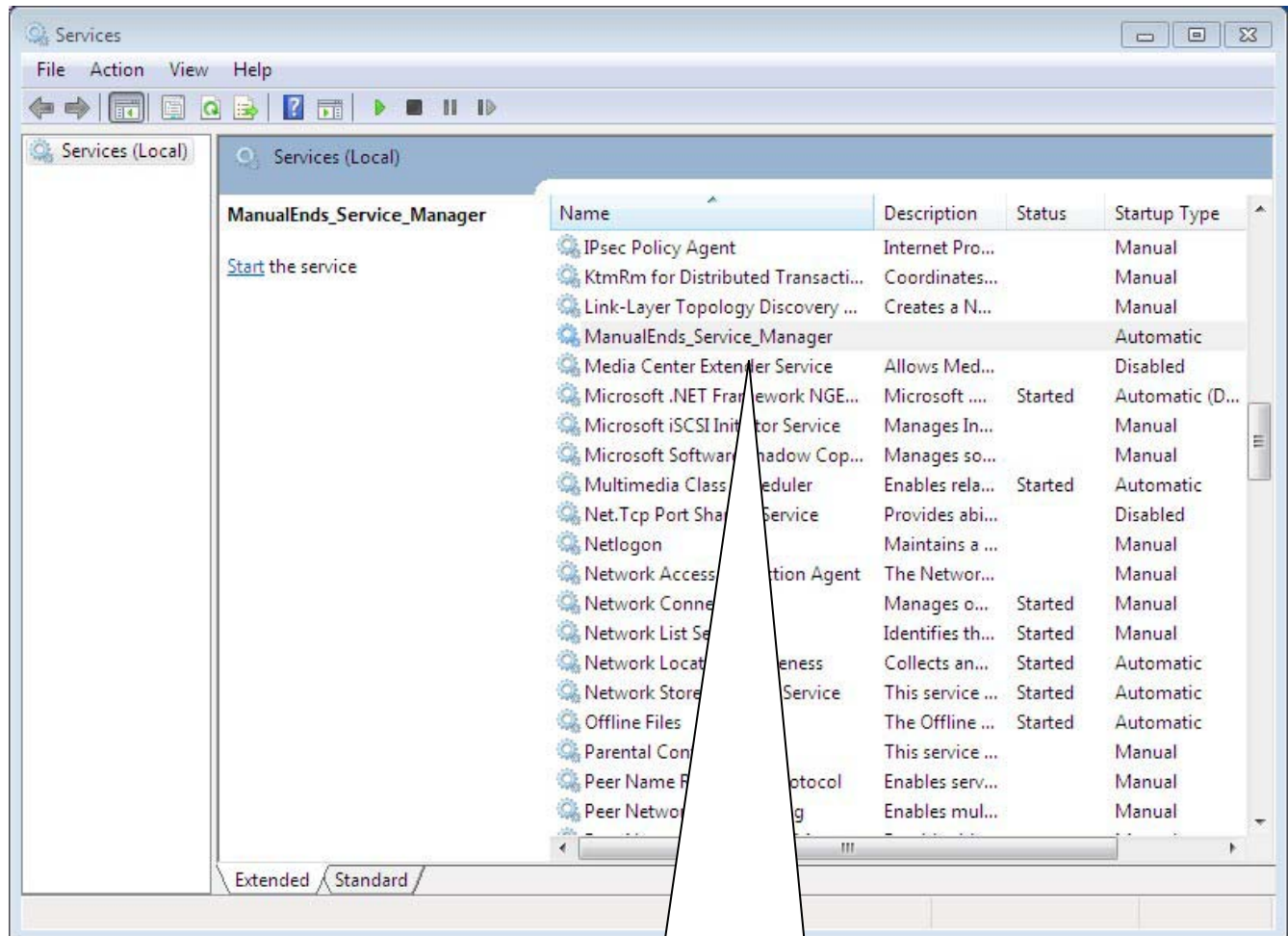
Figure 1.5 Service Control Manager Window



Or, go to > **Settings > Control Panel > Administrative Tools > Services**

Click on “ManualEnds_Service_Manager”

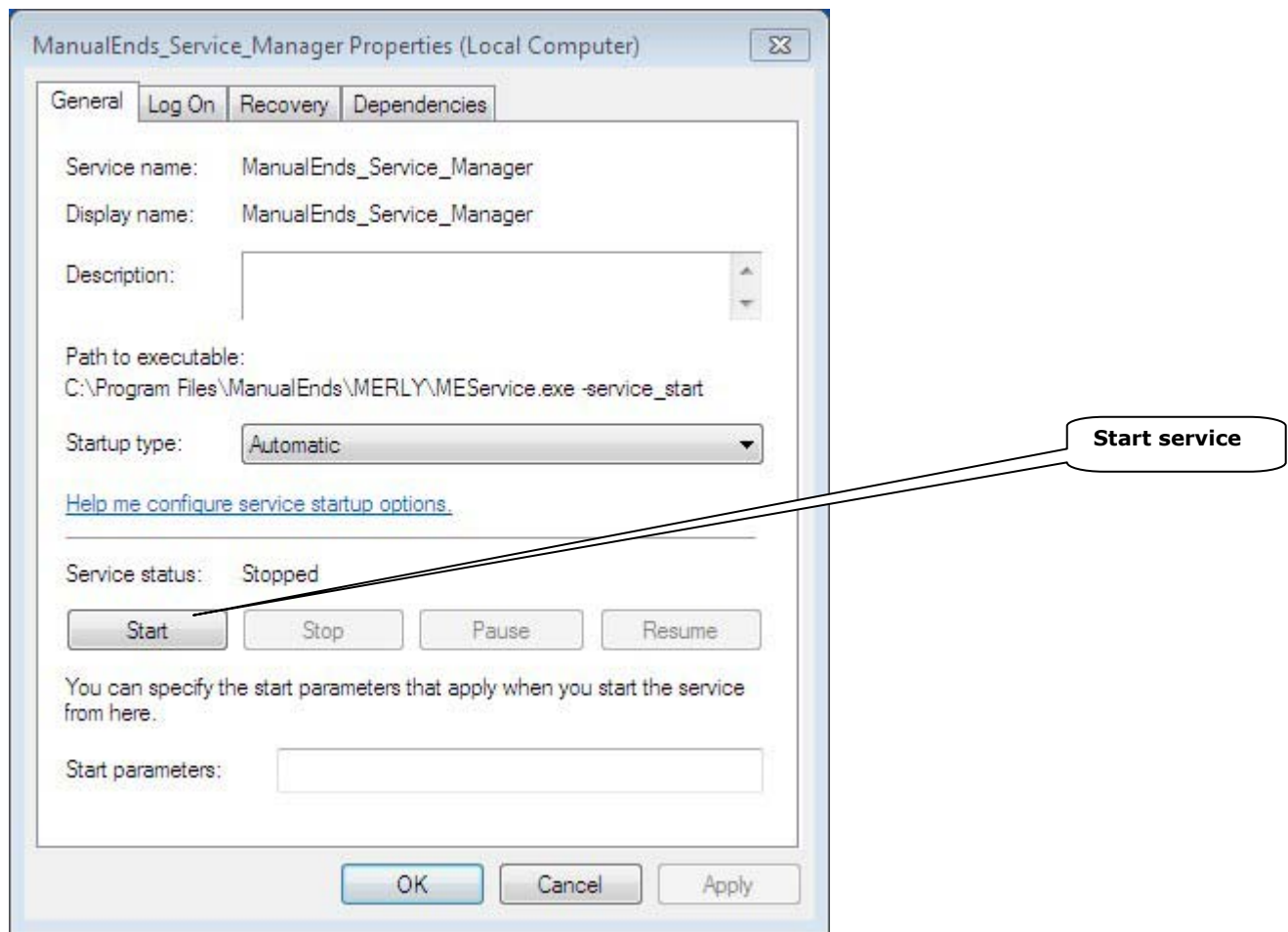
Figure 1.6 Windows Services Window



Click on ManualEnds_Service_Manager

Click on “Start” button. The IP Relay Server is running as NT Service at windows background now

Figure 1.7 ManualEnds_Service_Manager Windows

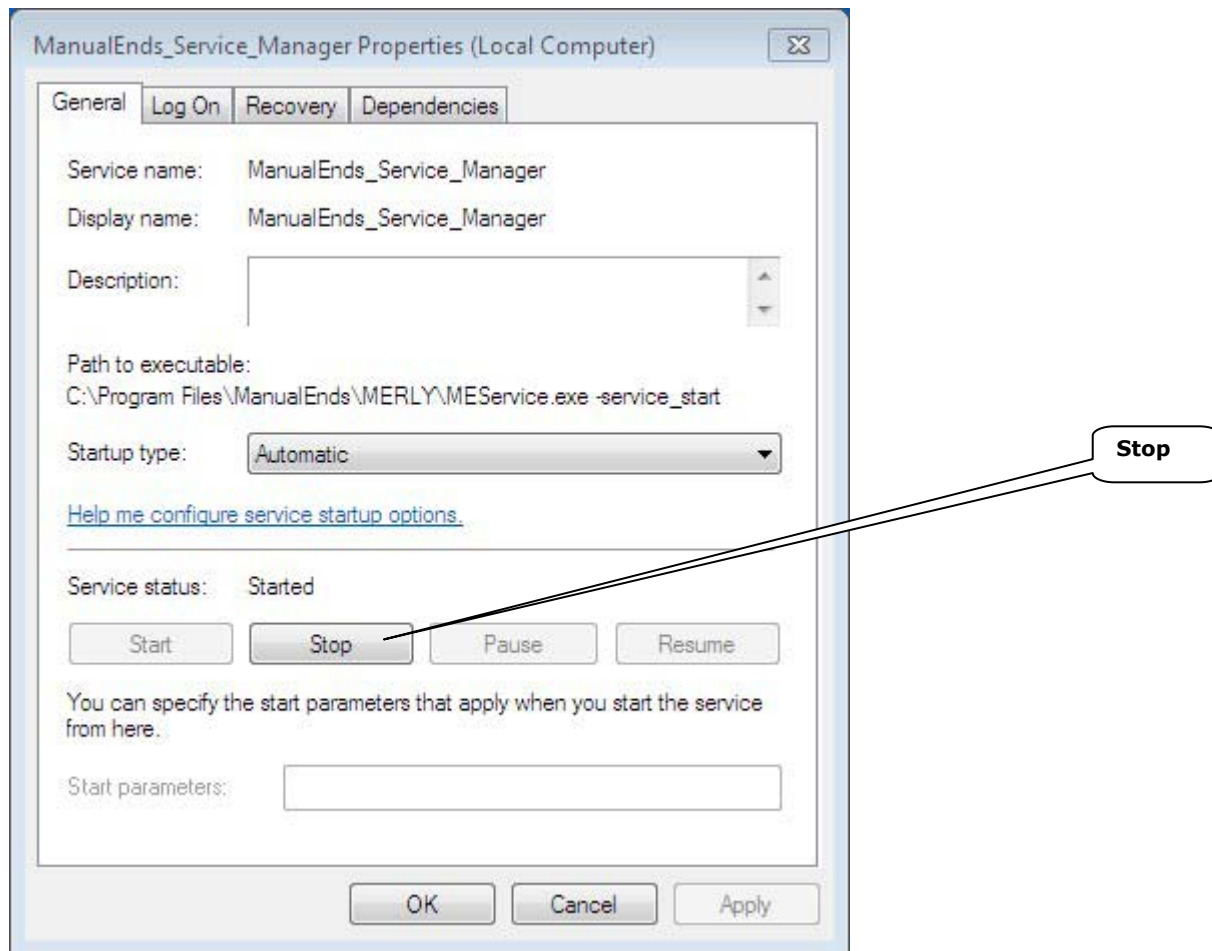


How to uninstall IP Relay Server Service

To uninstall IP Relay Server Service, please refer the following steps:.

- Check Local Service Status.
- If “Startup type” is “Started”, click on “Stop” button to stop it.

Figure 1.8 ManualEnds_Service_Manager Windows




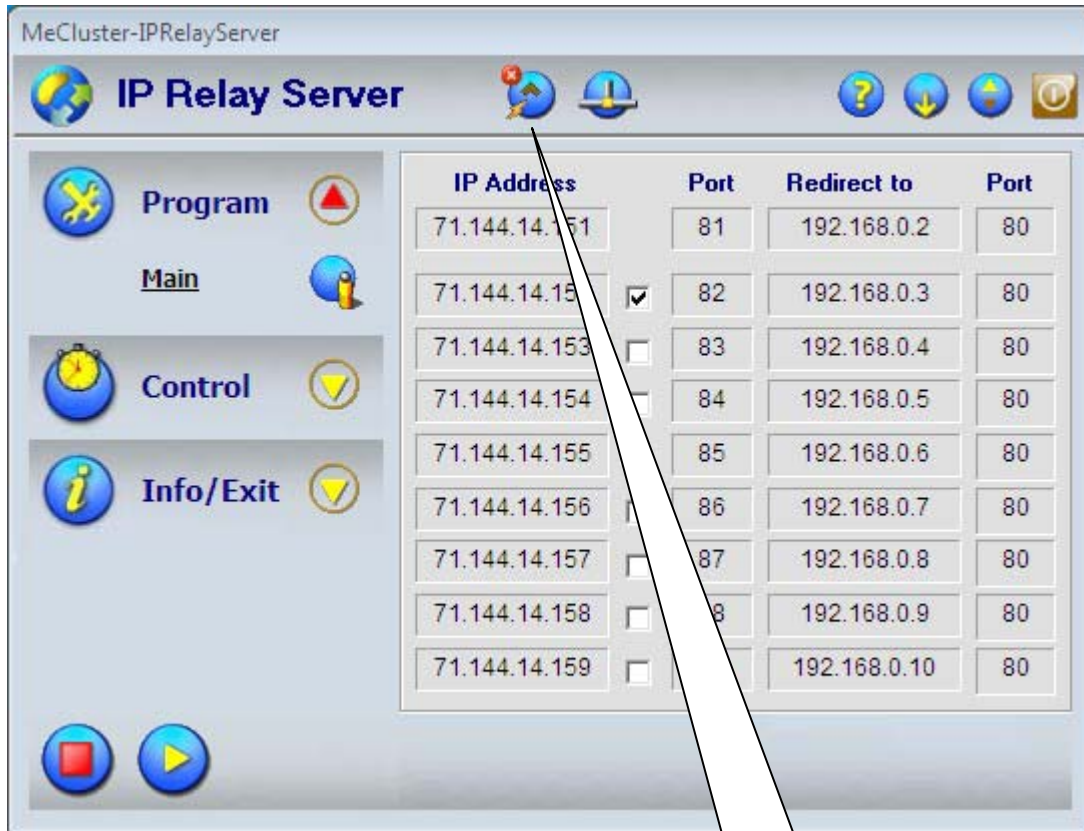
-  : “Auto/Service Mode”

Figure 1.9 Click on “Auto/Service Mode” icon



Auto/Service Mode

The Auto/Service Mode Wizards Window will pop up. Check it is “Service Mode” and click on Next button.

Figure 1.10 Auto/Service Mode Wizards Window



The Service Control Manager Window will pop up. Click on “Uninstall Service”

Figure 1.11 Service Control Manager Window



Note: To uninstall all programs of IP Relay Server completely, the “Startup type” must be “Stopped”,